

**START FROM  
RM 1,118,888  
ONWARDS**

# SIPADOK INDUSTRIAL

Approx. built up area 1,555.38 sqft & above

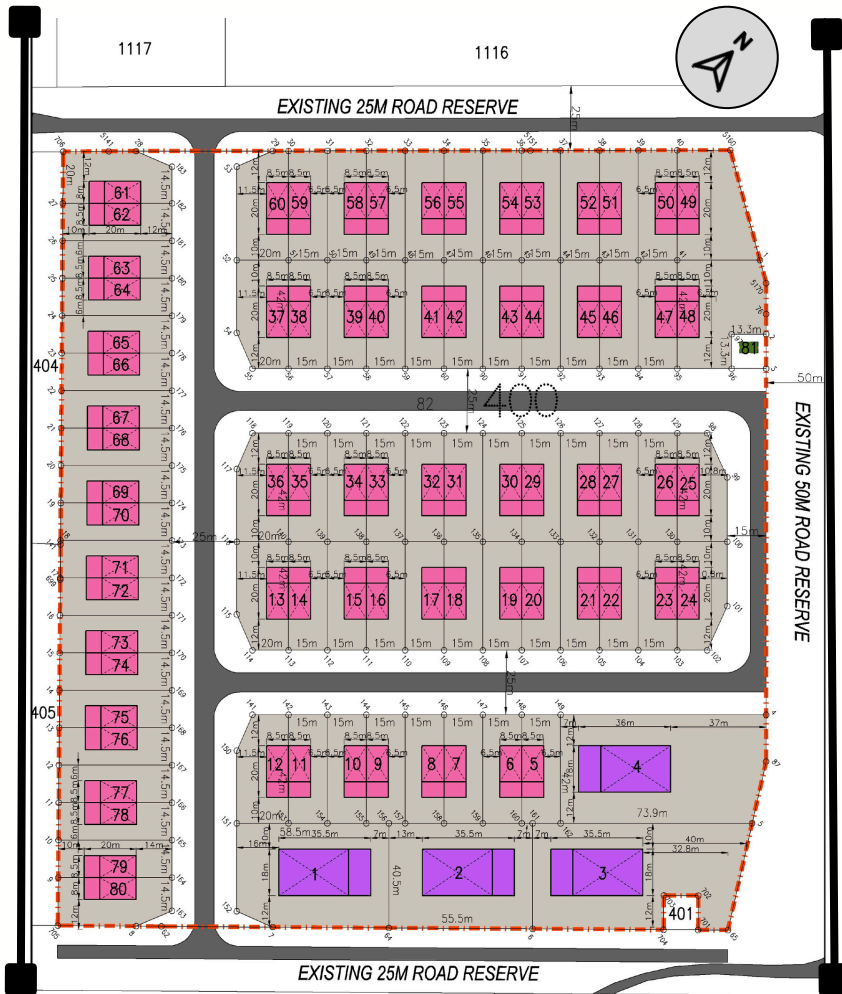
## Locality Plan

- 
- JALAN SIBIYU**
- Kai Dee Middle School
- SJK(C) Kai Ming
- Akademik Memandu Budiman Sdn Bhd
- TO BINTULU TOWN
- Taman Sri Pelabuhan
- Sarawak Energy Sdn Bhd Kemena Substation
- OGC Pickleball Court
- Maju Gas Supply Sdn Bhd
- TO BINTULU AIRPORT
- SCAN LOCATION**
- LOT 400**
- SIPADOK INDUSTRIAL**

 [www.sunmow.com.my](http://www.sunmow.com.my)  086-339 951 / 017-821 8002

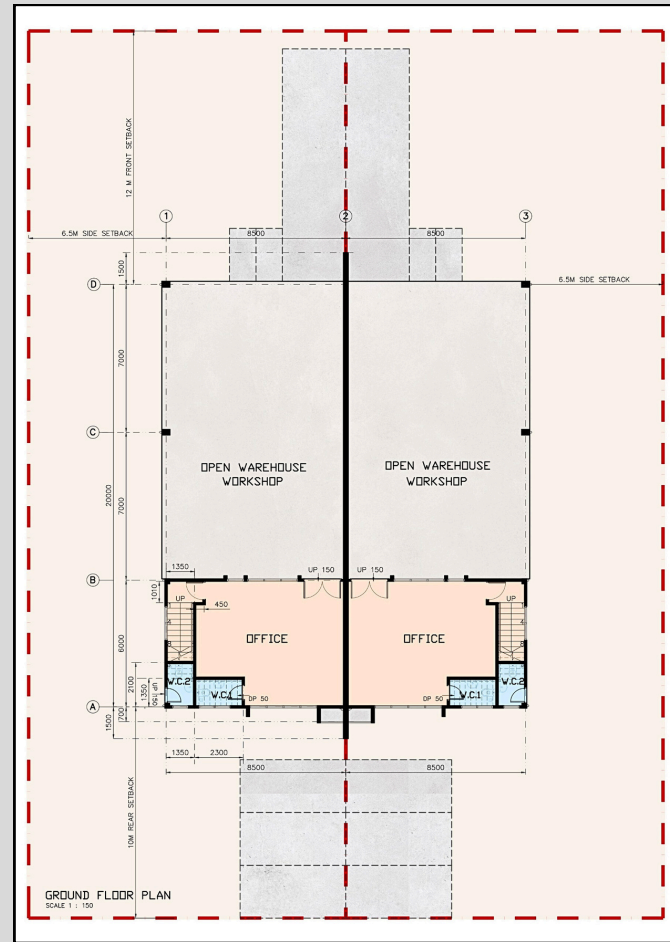
LOT 400

**SIPADOK  
INDUSTRIAL**

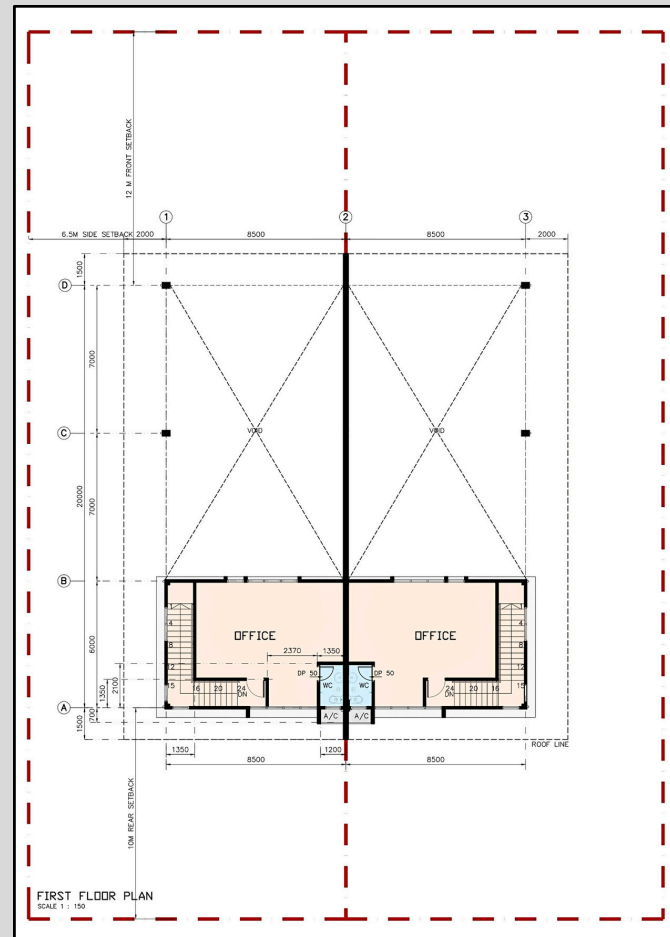


## FLOOR PLAN

### GROUND FLOOR PLAN



### FRIST FLOOR PLAN



Top 30 Prominent  
Developer in Sarawak



MERIT AWARD  
11<sup>TH</sup> PSEA 2023/2024

DEVELOPER:

**SUNMOW**<sup>®</sup>

**SUNMOW DEVELOPMENT SDN BHD**  
(912310-T)

F-G-01, Bintulu Paragon, Old Airport Place  
97000 Bintulu, Sarawak, Malaysia.



[www.sunmow.com.my](http://www.sunmow.com.my)



086-339 951 / 017-821 8002